

Edgar Filing: AT&T CORP - Form DEFA14A

AT&T CORP
Form DEFA14A
July 24, 2001

UNITED STATES
SECURITIES AND EXCHANGE COMMISSION
Washington D.C. 20549

SCHEDULE 14A
(Rule 14a-101)
INFORMATION REQUIRED IN PROXY STATEMENT

SCHEDULE 14A INFORMATION

Proxy Statement Pursuant to Section 14(a) of the Securities
Exchange Act of 1934

Filed by the Registrant |
Filed by a Party other than the Registrant |

Check the appropriate box:

| Preliminary Proxy Statement
| Confidential, for Use of the Commission Only (as permitted by
Rule 14a-6(e)(2))
| Definitive Proxy Statement
| Definitive Additional Materials
| Soliciting Material Pursuant to Rule 14a-12

AT&T Corp.

(Name of Registrant as Specified In Its Charter)

N/A

(Name of Person(s) Filing Proxy Statement, if other than the Registrant)

Payment of Filing Fee (Check the appropriate box):

| No fee required.
| Fee computed on table below per Exchange Act Rules 14a-6(i)(4)
and 0-11.

1) Title of each class of securities to which transaction applies:

2) Aggregate number of securities to which transaction applies:

3) Per unit price or other underlying value of transaction computed
pursuant to Exchange Act Rule 0-11 (set forth the amount on which
the filing fee is calculated and state how it was determined):

4) Proposed maximum aggregate value of transaction:

Edgar Filing: AT&T CORP - Form DEFA14A

5) Total fee paid:

Fee paid previously with preliminary materials.

Check box if any part of the fee is offset as provided by Exchange Act Rule 0-11(a)(2) and identify the filing for which the offsetting fee was paid previously. Identify the previous filing by registration statement number, or the Form or Schedule and the date of its filing.

1) Amount Previously Paid:

2) Form, Schedule or Registration Statement No.:

3) Filing Party:

4) Date Filed:

On July 24, 2001, AT&T Corp. made a presentation via teleconference of the following. In addition a copy of these slides was made available on the Company's web site.

[AT&T logo] AT&T BROADBAND

July 2001

INVESTOR PRESENTATION

Safe Harbor

The following are "forward-looking statements" which are based on management's beliefs as well as on a number of assumptions concerning future events made by and information currently available to management. The audiences are cautioned not to put undue reliance on such forward-looking statements, which are not a guarantee of performance and are subject to a number of uncertainties and other factors, many of which are outside AT&T's control, that could cause actual results to differ materially from such statements. For a more detailed description of the factors that could cause such a difference, please see AT&T's filings with the Securities and Exchange Commission. AT&T disclaims any intention or obligation to update or revise any forward-looking statements,

Edgar Filing: AT&T CORP - Form DEFA14A

whether as a result of new information, future events or otherwise. This information is presented solely to provide additional information to further understand the results of AT&T.

In connection with these transactions, AT&T will be filing proxy statements, tender offer statements and other materials with the Securities and Exchange Commission. Security holders are urged to read these materials when they become available because they will contain important information. Investors and security holders may obtain a free copy of these materials when they become available as well as other materials filed with the Securities and Exchange Commission concerning AT&T at the Securities and Exchange Commission's website at <http://www.sec.gov>. In addition, these materials and other documents may be obtained for free from AT&T by directing a request to AT&T at 295 North Maple Drive, Basking Ridge, NJ 07920; Attn: Investor Relations.

AT&T and its officers and directors may be deemed to be participants in the solicitation of proxies from AT&T's shareholders with respect to these transactions. Information regarding such officers and directors is included in AT&T's proxy statement for its 2001 annual meeting of stockholders filed with the Securities and Exchange Commission on March 30, 2001. This document is available free of charge at the SEC's internet site or from AT&T as described above.

1 ----- [AT&T logo] AT&T Broadband

Management Representatives

TITLE -----	POSITION -----	DISCUSSION TOPICS -----
Mike Armstrong	Chairman and CEO AT&T Corp.	AT&T Broadband Vision
Dan Somers	President and CEO AT&T Broadband	Operations
Greg Braden	EVP Broadband Services and CTO AT&T Broadband	Technology and Telephony
Mike Huseby	EVP and CFO AT&T Broadband	Financial

2 ----- [AT&T logo] AT&T Broadband

[cordless telephone graphic]
[computer graphic]
[television graphic]

THE AT&T BROADBAND VISION

Edgar Filing: AT&T CORP - Form DEFA14A

MIKE ARMSTRONG
CHAIRMAN AND CEO, AT&T

AT&T Broadband Vision

Be the leading U.S. provider of integrated residential broadband including:
video, voice, and data services

- MARKET OPPORTUNITY for all broadband services is large and expanding
- Superior FACILITIES-BASED broadband access to the home
- Large, well-clustered MAJOR MARKET FOCUS
- Enhance CUSTOMER RELATIONSHIPS through superior service
- Maximize the POWERFUL AT&T BRAND

Deliver superior returns for investors

4 ----- [AT&T logo] AT&T Broadband

Best Industry Footprint

[map graphic of the United States]

Atlanta	0.6
Bay Area	1.8
Boston/Hartford	2.0
Chicago	1.7
Dallas	0.6
Denver	0.6
Los Angeles	0.5
Miami	0.7
Pittsburgh	0.6
Portland	0.5
Sacramento	0.6
Seattle	1.0

Operations Snapshot (in mm) (1)

Company	Subs	Homes Passed	Leadership in Top 25 DMAs	Market Share of Top 25 DMAs	% of Subs in Clusters >500K
AT&T Broadband (2)	13.8	24.2	12	37%	83%
Time Warner	12.6	21.1	4	16%	31%
Comcast	8.4	13.8	4	16%	66%
Charter	6.9	10.5	1	7%	14%
Cox	6.3	9.9	2	6%	26%
Adelphia	5.5	9.1	1	8%	47%
Cablevision	3.0	4.4	1	9%	100%

Edgar Filing: AT&T CORP - Form DEFA14A

- 127,000 plant miles and infrastructure rebuilt to support "triple play"
- Scaling of new and advanced broadband services from 2.2 million customers at the beginning of 2000 to 5.3 million customers today
- Rationalized cost structure
 - Headends reduced from 200 to 40, serving 11 million customers
 - Call centers reduced from 200 to 30
 - Employees reduced from 53,000 to 43,000
- Reorganization of management structure
- Overhead reduced to \$250 million annually, including AT&T allocations

8 ----- [AT&T logo] AT&T Broadband

What Is the Impact

- Approximately \$150 million of margin improvement realized to date
- Total of \$500 million of margin improvement expected to be realized on a run-rate basis by year-end 2001
- Completed reorganization of corporate and field structure to rightsize organization

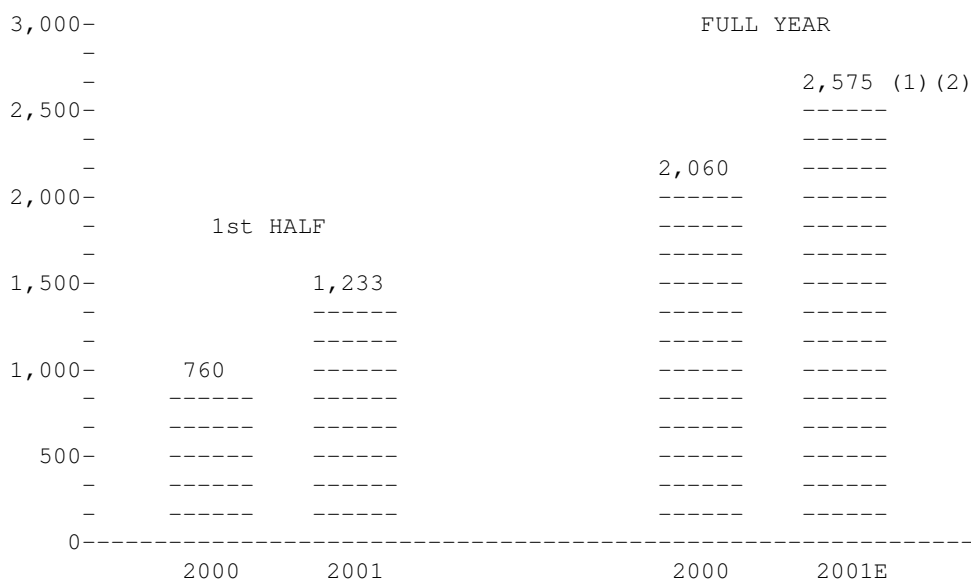
Action -----	Decision to Implement -----	Impact Beginning -----
End of Telephony promotion	August 2000	Feb 2001
First round of headcount reductions	December 2000	Feb 2001
Video price increase	October 2000	Feb 2001
Second round of headcount reductions	March 2001	May 2001
Core video growth initiatives	April 2001	May 2001
High speed data price increase	April 2001	June 2001
Video equipment rate increase	April 2001	July 2001

9 ----- [AT&T logo] AT&T Broadband

Sustained Growth In Advanced Services

2000-2001 ADVANCED SERVICE NET ADDITIONS
(in thousands)

Edgar Filing: AT&T CORP - Form DEFA14A



	DIGITAL	HSD	TELEPHONY
1st HALF 2000	387	227	146
1st HALF 2001	598	334	301
FULL YEAR 2000	954	631	475
FULL YEAR 2001E (1) (2)			

(1) Guidance assumes 2000 base will be further adjusted for impact of any transactions closed after 2Q01.

(2) Growth based on current guidance of 25% year-over-year growth.

10 ----- [AT&T logo] AT&T Broadband

Leading Provider of Advanced Services

Digital Penetration(1)	Data Penetration	Telephony Penetration
[bar graph]	[bar graph]	[bar graph]
CVC..... 0.0%	ADLAC..... 3.3%	AT&T BROADBAND
CMCSK (2)..... 15.5%	CHTR..... 6.0%	1Q..... 12.8%
COX	CMCSK..... 6.9%	2Q..... 14.0%
1Q..... 15.5%	COX	COX
2Q..... 17.4%	1Q..... 7.6%	1Q..... 11.1%
AT&T BROADBAND	2Q..... 8.0%	2Q..... 12.2%
1Q..... 19.7%	AT&T BROADBAND	
2Q..... 21.6%	1Q..... 8.3%	
CHTR..... 21.2%	2Q..... 9.6%	

Edgar Filing: AT&T CORP - Form DEFA14A

\$45	\$43.10	----	----	----	----	----	----	----	----
		----	----	----	----	----	----	----	----
\$40		----	----	----	----	----	----	----	----
		----	----	----	----	----	----	----	----
\$35		----	----	----	----	-1Q-	-2Q-	-1Q-	-2Q-
		----	----	----	----	----	----	----	----
\$30		----	----	----	----	----	----	----	----
	Adelphia	Charter	Time Warner	Comcast	Cox			AT&T Broadband	Cablevision

Advanced services drive ARPU well above industry average

Note: All peer comparisons are as of 1Q01 unless otherwise noted.

13 ----- [AT&T logo] AT&T Broadband

New Services in Progress

----Video-on-Demand [video graphic]
(2002)

----Interactive TV [television graphic]
(2002)

[fiber optics
cable graphic]

----PVR Capabilities [video recorder
graphic]
(2002)

----T-Commerce [television graphic]
(2003)

14 ----- [AT&T logo] AT&T Broadband

Best Industry Footprint

[map graphic of the United States]

Atlanta	0.6
Bay Area	1.8
Boston/Hartford	2.0
Chicago	1.7
Dallas	0.6
Denver	0.6
Los Angeles	0.5
Miami	0.7
Pittsburgh	0.6
Portland	0.5
Sacramento	0.6
Seattle	1.0

Edgar Filing: AT&T CORP - Form DEFA14A

83% of Customers are in the Top 25 DMAs

15 ----- [AT&T logo] AT&T Broadband

Market Review: Boston

----- [Boston skyline graphic]

2.9 million homes passed, 5th largest DMA

MARKET CHARACTERISTICS	ACTIONS	YTD RESULTS
-Very attractive demographics with average income of \$69,000	-Integrating Cablevision acquisition	-13% revenue growth
		-69% basic penetration
-Leader in bundling	-Reduced call centers from 8 to 1	-16% digital penetration: +5 p.p.
-Plant upgrades nearly complete, able to offer complete bundle	-Launched Digital in 2000	-14% data penetration: +3 p.p.
	-More powerful product offering relative to competition	-11% telephony penetration +4 p.p.
-Operating as one integrated system with one virtual call center		-- >100K customers
-Competitive market		-Below average DBS penetration

 Boston is our strongest performing market and will continue to grow as advanced services penetration increases

16 ----- [AT&T logo] AT&T Broadband

Market Review: Chicago

----- [Chicago skyline graphic]

3.5 million homes passed, 3rd largest DMA

MARKET CHARACTERISTICS	ACTIONS	YTD RESULTS
-Attratctive demographics with average income of \$58,000	-Integrated operations of 7 MSOs	-14% revenue growth
		-50% basic penetration
-Footprint covering nearly the entire DMA	-Headends reduced from 64 to 2	-22% digital penetration: +6 p.p.
-Strong telephony roll-out	-Call centers reduced from 16 to 3	-10% data penetration: +3 p.p.
-Backbone and headend segments of rebuilds nearly complete	-Dispatch locations reduced from 19 to 9	-18% telephony penetration: +8 p.p.
	-20% workforce and contractor reduction	--Some suburbs have 40% penetration
-Under-penetrated in		

Edgar Filing: AT&T CORP - Form DEFA14A

Basic: primarily
downtown areas

Chicago is in the final stages of its integration effort. We are now
beginning to realize the operational and financial benefits.

17 ----- [AT&T logo] AT&T Broadband

Market Review: Bay Area

----- [Bay Area skyline graphic]

2.7 million homes passed, 6th largest DMA

MARKET CHARACTERISTICS	ACTIONS	YTD RESULTS
-Very attractive demographics with average income of \$78,000 --Regional economic issues	-Plant continues to require significant investment	-Almost 16% revenue growth
-Footprint covers most of the metro area	-Focus on basic video growth	-63% basic penetration
-Above average penetration in all of the advanced services	-Streamlined fulfillment areas from 9 to 5	-23% digital penetration: +2 p.p.
-Competitive market	-Reduced number of customer care centers from 12 to 1	-15% data penetration: +3 p.p.
-Backbone and headend segments of rebuild nearly complete	-One care center with a single toll free number	-19% telephony penetration: +5 p.p. --Many communities in high 20s
	-17% headcount reduction	

The Bay Area is showing strong product growth, penetration and financial trends. Significant momentum is in place.

18 ----- [AT&T logo] AT&T Broadband

Significant Upside in Video Penetration

Video penetration of 56% vs. 63% for the industry

ACTIONS CURRENTLY UNDER WAY:

- National Marketing Campaign
- Sales Force Financial Incentives

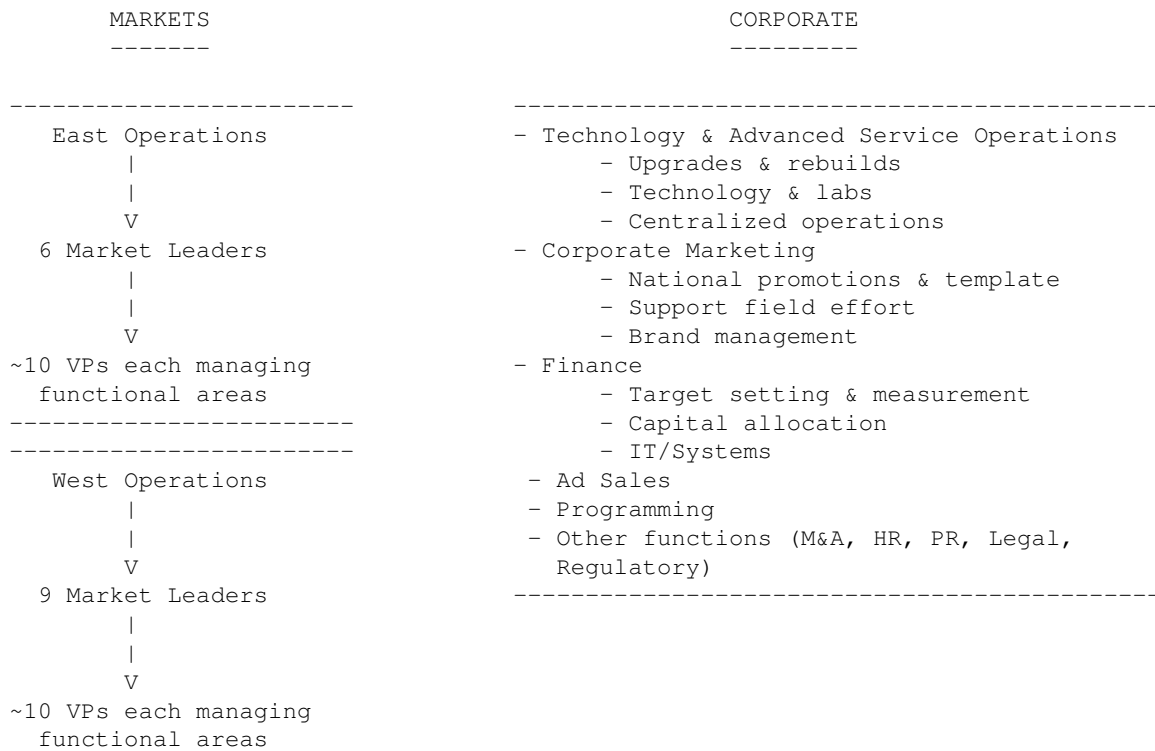
Edgar Filing: AT&T CORP - Form DEFA14A

- Enhanced Programming
- Signal Theft Audit
- Retention Initiatives
- Increasing Network Quality

 Every 1.3 p.p. increase in video penetration is expected to
 increase our EBITDA margin by 1 percentage point.

19 ----- [AT&T logo] AT&T Broadband

Simplified Management Structure



20 ----- [AT&T logo] AT&T Broadband

Experienced Local Management Team in Place

MARKET	DATE IN PLACE	LEADER EXPERIENCE	RELATED EXPERIENCE
Denver	6/96	TCI	16
Pittsburgh	4/97	TCI	18
Salt Lake City	1/99	TCI	22

Edgar Filing: AT&T CORP - Form DEFA14A

Atlanta	4/00	TCI	5
Boston	5/00	Financial Services	1
Dallas	6/00	TCI	8
Miami	6/00	TCI	17
Portland	6/00	MediaOne	13
San Francisco	7/00	MediaOne	20
Los Angeles	7/00	MediaOne	14
Seattle	7/00	Wireless	21
Sacramento	8/00	MediaOne	12
Chicago	9/00	Wireless	20

21 ----- [AT&T logo] AT&T Broadband

Steps to Attain Industry Margins

RECENT MARGINS (1)		MARGIN INITIATIVES	MARGIN GOALS
		Actions Already Taken	
1Q01	2Q01	- Market integration	
----- --> ----- -->		- Facility consolidation	
18.3%	23.4%	- Headcount reduction	
		- Outsourcing opportunities	-----> 38 - 40%
		- Pricing actions	-----
		- Advanced services unit cost reduction	
		Actions Underway	
		- Basic video initiatives	
		- Back-office and IT systems integration	
		- Data and telephony: Scaling and profitability	

(1) Excludes other income and restructuring charges in both quarters

22 ----- [AT&T logo] AT&T Broadband

Positioned For Continued Growth

- Foundation is established
- Demand for advanced services remains strong
- Operational execution is driving financial results

 Actions already underway result in tangible second quarter progress and position us for future financial returns

Edgar Filing: AT&T CORP - Form DEFA14A

23 ----- [AT&T logo] AT&T Broadband

[cordless telephone graphic]
[computer graphic]
[television graphic]

TECHNOLOGY AND TELEPHONY

GREG BRADEN
EVP BROADBAND SERVICES
AND CTO

Full Service Broadband Network Architecture

[graphic depicting network architecture]

25 ----- [AT&T logo] AT&T Broadband

Capacity: Full Service Capable Homes

[bar graphs]

100%- -----
- | Digital |
- | Video |

PLANT STATUS

[pie graph]